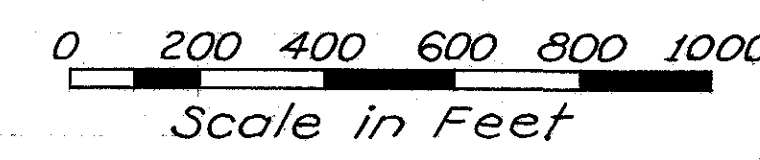


# LOCATION PLAN LONDON - GROVEPORT RD. STATE ROUTE 665 SEC. 18.42 MADISON TWP. FRANKLIN CO. SEC. 6, TWP. 10 N, R. 21 W SEC'S. 31 & 32, TWP. 11 N, R. 21 W

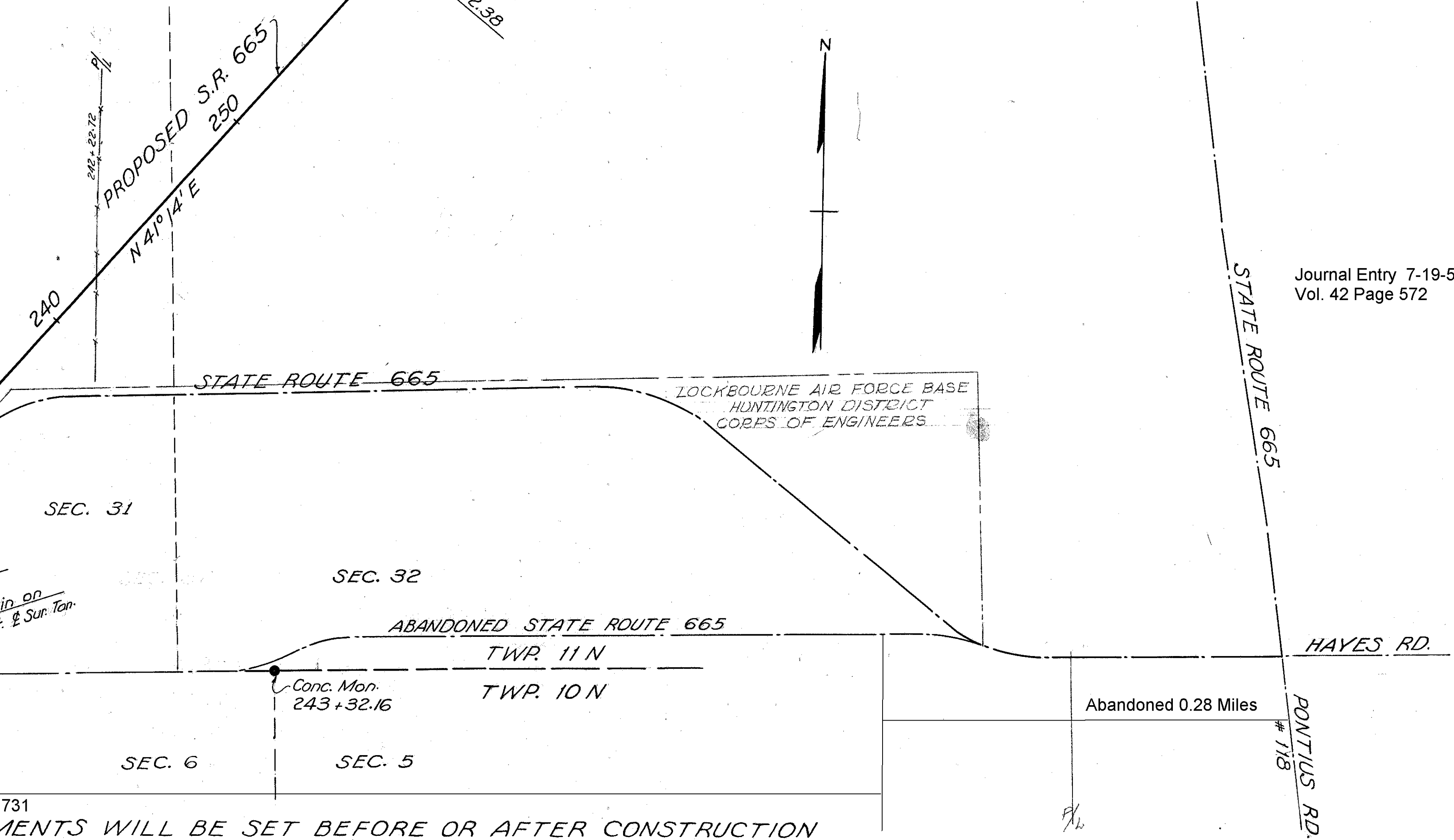
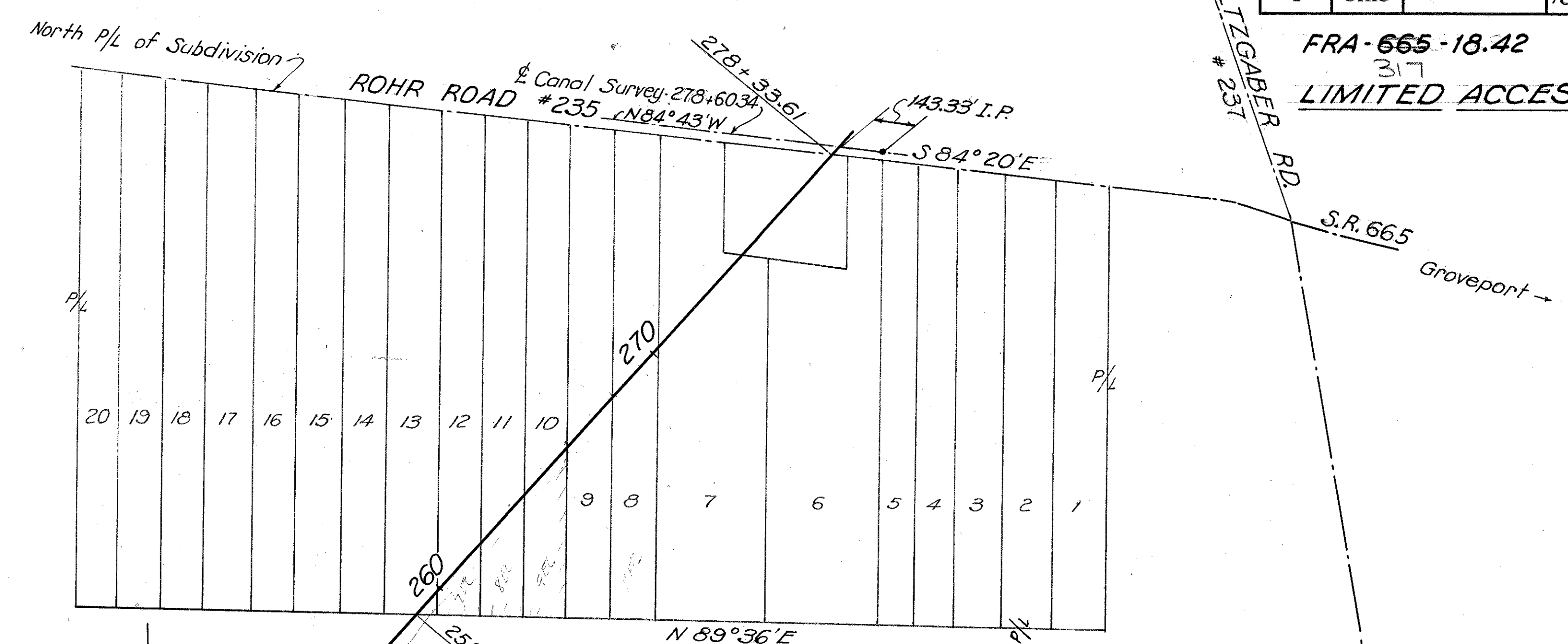


Signed G. Walsdorf  
G. W. Alschorf  
Date 9-16-55 Division Deputy Director  
Registered Surveyor No. 1377

Recorded in Plat Book Vol. 17,  
Page 366 - Franklin Co.

FED. RD. DIVISION	STATE	PROJECT	DATE
2	OHIO		1955

FRA-665-18.42  
317  
LIMITED ACCESS



Journal Entry 7-19-57  
Vol. 42 Page 572

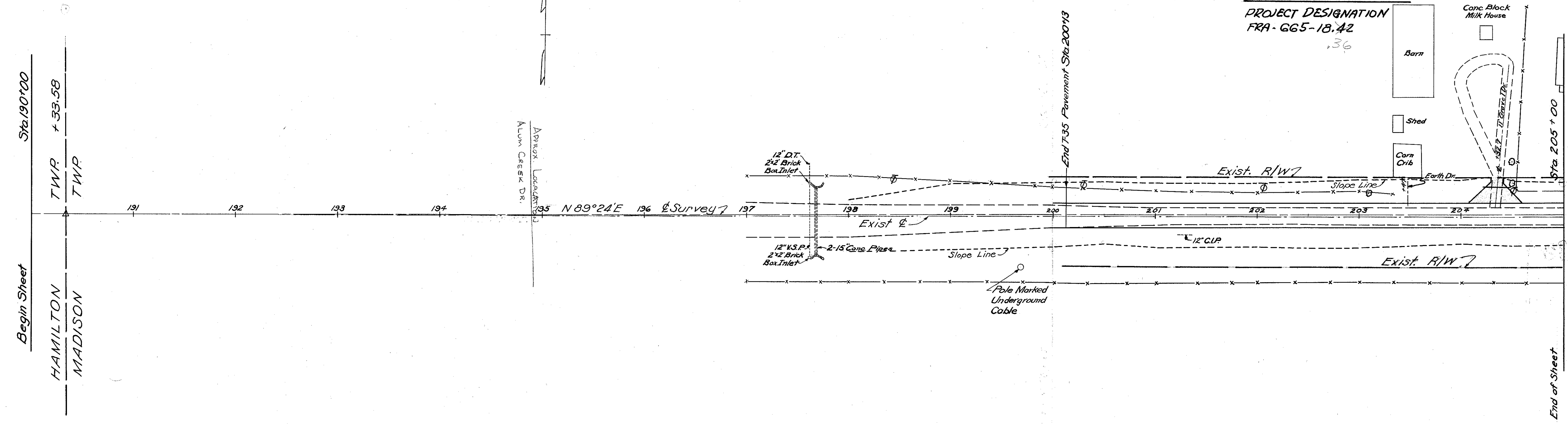
Sta. 190+33.58  
Conc. Monument Found  
2' Below Pavt.  
HAMILTON TWP.  
MADISON TWP.

TWP. 11 N  
TWP. 10 N  
N 89° 24' E  
N 89° 27' E  
Exist. E N 89° 22' 45" E

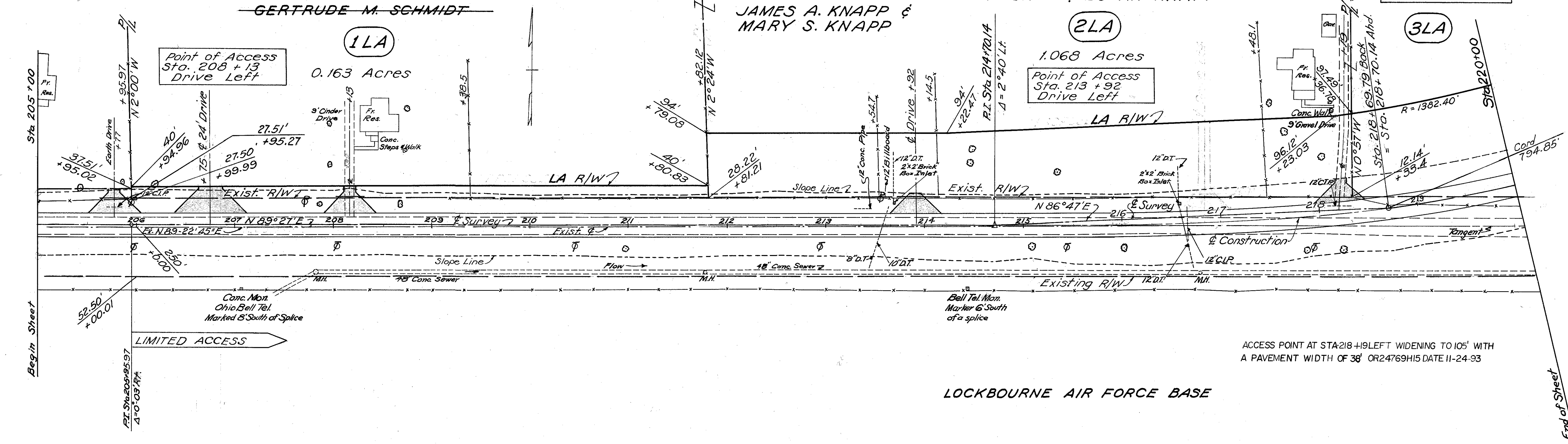
P.I. Sta. 205+95.97  
Δ = 0° 03' Rt.  
P.I. Sta. 214+70.14  
Δ = 2° 40' Lt.  
Sta. 218+69.79 Back  
Sta. 218+70.14 Ahd.  
ΔC = 32° 13' Lt.  
794.85' (Cord)  
N 65° 20' 30" E  
R = 1432.4'  
P.I. Sta. 223+13.08  
CN 43° 54' E  
Sta. 226+75.56  
Sta. 226+75.91 Ahd.  
Δ = 2° 40' Lt.  
225+62.82 Iron Pin on  
Exist. E, 0.07 Rt. E Sur. Tan.

Vacated  
9-30-1955 Vol. 40 Page 731  
CENTERLINE REFERENCE MONUMENTS WILL BE SET BEFORE OR AFTER CONSTRUCTION

 STA. 190 + 33.58	 P.I. STA. 205+95.97	 P.I. STA. 214 + 70.14	 STA. 218 + 69.79 BACK = STA. 218 + 70.14 AHEAD	 P.I. STA. 223 + 13.08	 STA. 226 + 75.56 BACK = STA. 226 + 75.91 AHD.	 P.I. STA. 230 + 75.56	 P.O.T. STA. 255+00	 P.O.T. STA. 278+33.61
----------------------	-------------------------	---------------------------	-------------------------------------------------------	---------------------------	------------------------------------------------------	---------------------------	------------------------	---------------------------



Relocated Point of Access from left of Sta. 243 + 40 to left of Sta. 206 + 75.  
Entry made on the Journal of the Director of Highways, November 5, 1969 in Vol. 54, Page 1031.



ACCESS POINT AT STA 218 + 19 LEFT WIDENING TO 105' WITH A PAVEMENT WIDTH OF 38' OR 24769H15 DATE 11-24-93

LOCKBOURNE AIR FORCE BASE





FED. RD. DIVISION	STATE	PROJECT	TYPE FUNDS
2	OHIO		1955

